

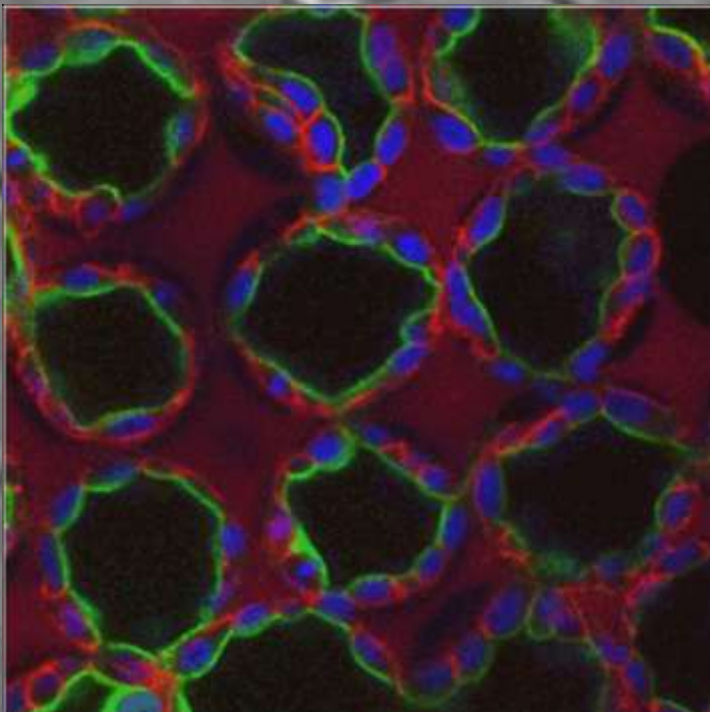
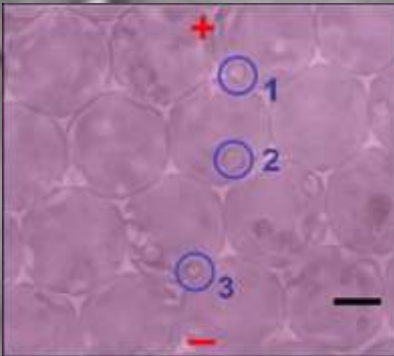


Bio-Byblos Biomedical

3D Cell Culture Gelatin Scaffold

**Go Matrix**

## Uniform Micro-environment

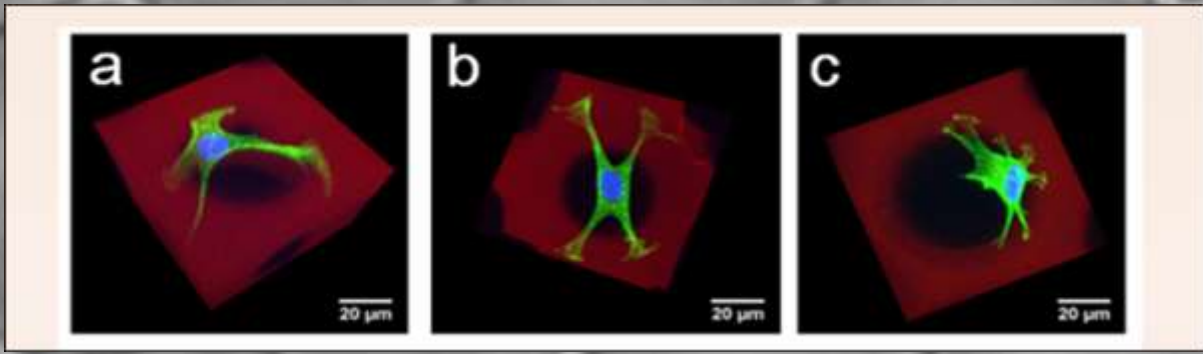


Epithelial (MDCK)

### Advantages of Go Matrix

- Made of Easily Manipulated Material
- Custom Pore Size and Porosity
- Uniform Micro-environment
- Open for Cell Communication

*US Patent Pending  
For Research Purpose Only*



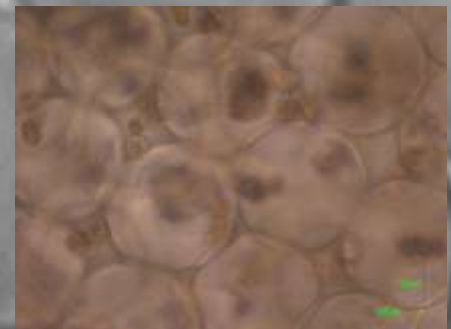
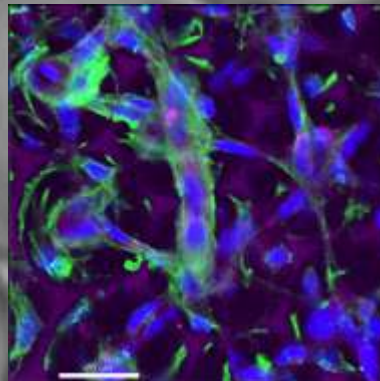
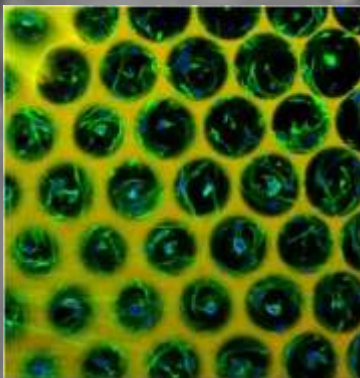
a, b & c: 3T3 Fibroblasts

### 3D Culture Model for

- Pre-Clinical Drug Evaluation
- Drug Screening
- Toxicology
- Tissue Engineering
- Mechanobiology

### Applied Cell Types

- MDCK cells
- C2C12 Myoblast
- 3T3 Fibroblast
- Cardiomyocyte
- CLI-0, CLI-5 & A549



D & E: C2C12 Myoblasts

Cells forming 3D morphology  
in uniform pores of Go Matrix

Specification	
Pore size (µm)	60, 90, 130
Thick (mm)	1
Diameter (mm)	9

Our Info:

www.bbbmd.com  
 sales@bbbmd.com.tw  
 +886-2-2832-2379  
 +886-2-2831-8169