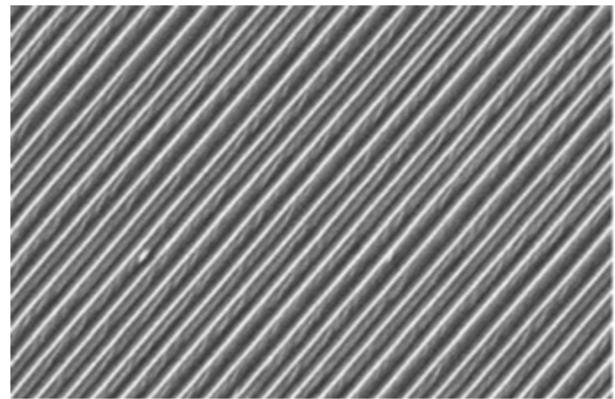
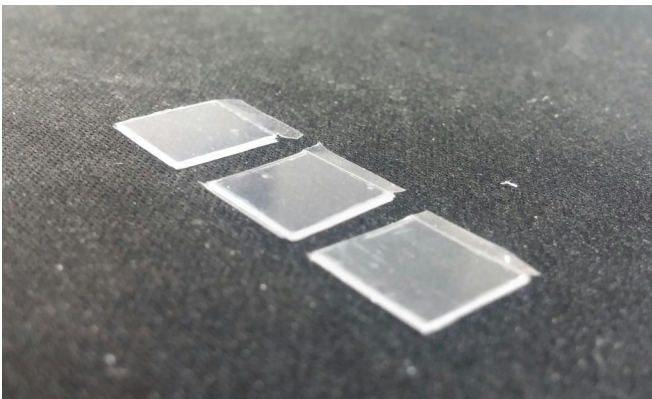
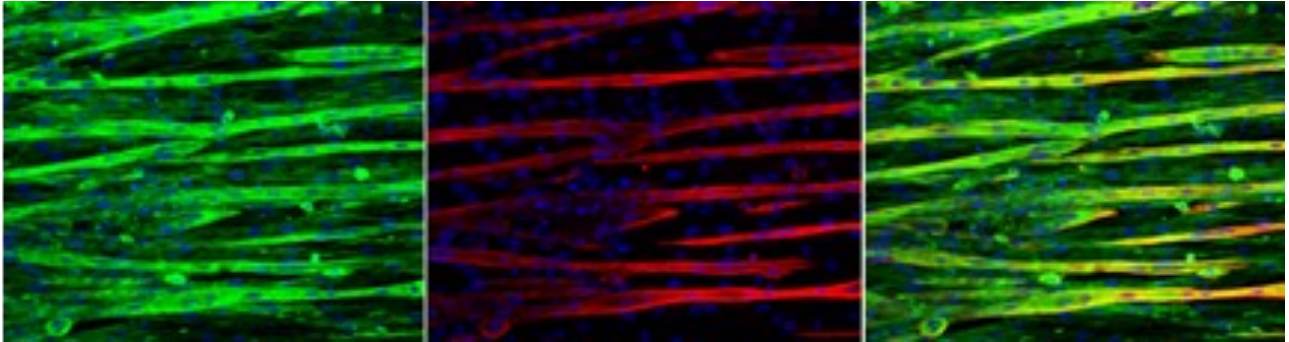
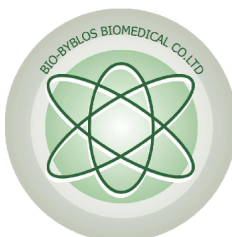


# Vivoalign



- Nanogroove topography to facilitate cell alignment *in vitro*.
- Alignment of cells can be observed as early as 24 hours post seeding.
- Shortens differentiation time for stem cell research.
- No additional coating required.
- Designed to fit in 24-well plates (10mm x 10mm), making high-throughput analysis possible.
- Can be easily removed from well plate for staining and observation under confocal microscope.
- Ideal for cardiac and skeletal muscle research, neural differentiation, cell migration, cell motility research, drug testing, etc.



**BIO-BYBLOS BIOMEDICAL CO., LTD**  
**加樂生醫股份有限公司**

**TEL : +886 2 2831 2379    Email : sales@bbbmd.com.tw**