



BIO-BYBLOS BIOMEDICAL CO., LTD

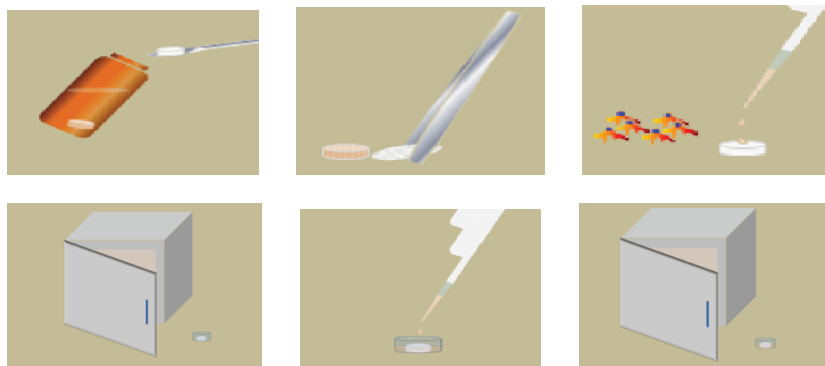
Product Description

GO-Matrix is a scaffold aiming for three dimensional cell culture. GO-Matrix is made of gelatin from porcine skin. GO-Matrix features its uniform micro-environment with its pore size range of small deviation (<2%).

Cell Culture Using GO-Matrix (Detailed)—Wet Form

- Pick out scaffolds from PBS buffer.
- Use pieces of filter paper to dehydrate scaffolds gently.
- Re-suspend cells in culture medium.
- Load cell suspension of 40 ul with cell number you need (for dense culture: 2.5×10^6 /ml is suggested; for sparse culture: 2.5×10^5 /ml is suggested) on the scaffolds. (Optional) Pipette 6 to 8 times (inhale liquid from the side and exhale on top) and high seeding efficiency will be assured. Re-suspend cells in culture medium.
- Incubate for
 - Primary Cell : 60 - 90 minutes. (Maybe optimize according to the cell type)
 - Cell Line : 240 minutes. (Maybe optimize according to the cell type)
- Immerse scaffolds with medium and put it back to incubation.
- (Optional) After overnight incubation, transfer the seeded sponge into new well plate, replenish the medium and continue the culture.
- Follow culture routine work flow. Change medium as frequently as dish culture.

(Simplified version)



GO-Matrix is ready for various kinds of NHS-ester dye labeling, such as Cy-dyes, FITC, Rhodamine, etc. Label scaffolds under appropriate conditions before culture and fluorescence images of scaffolds are available.

Retrieve Cells inside Scaffolds

- Smash scaffolds into pieces and wash fragments gently with PBS.
- Immerse fragments in TrypLE™ for 10-30 minutes (may be optimized according to the cell type.)
- Follow the usual protocol to collect cell suspension.

Measuring Cell Viability

Use Live/Dead Kit to assess cell viability.

Retrieve cells inside scaffolds and use trypan blue or immerse scaffolds in trypan blue and count *in situ*.

Immunostain inside Scaffolds

Wash scaffolds with cells using PBS. Follow usual protocol of staining and blocking.

Explanation of Symbols and Warnings

The symbols and warnings present on the product label are explained below.



Use by MMM-YYYY



Temperature limitation
4 °C - 40 °C



LOT/BATCH #



See Website



See insert



Research use only



Sterilized by irradiation



Bio-Byblos Cat #

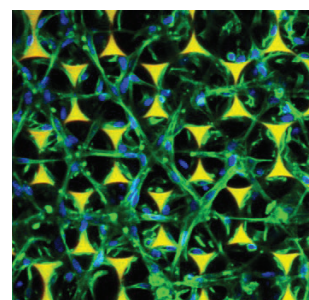


Made in Taiwan

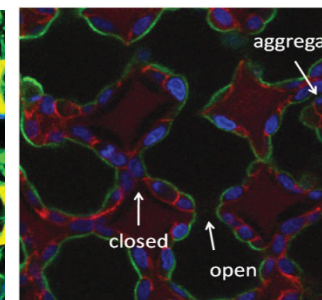
Technical Support

For more additional product information, please visit <http://www.bbmd.com.tw/>

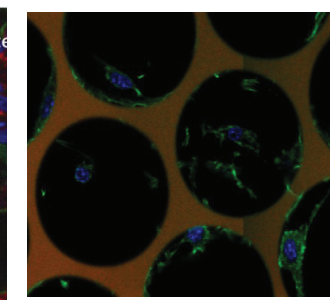
Gallery



Muscle cells



Epithelial cells



Fibroblasts